



NEOCOLORI

Colori dell'Italia


Bellagio

DATI TECNICI

Peso specifico:	1.550 kg/lit +/- 3%
Viscosità:	Thixotropico
Essiccazione:	al tatto 2 ore, da 6 a 8 tra una mano e l'altra
Temperatura di applicazione:	tra 10 °C e 30 °C
Resa:	da 8 - 10 m ² per 1 litro
Pacchetto:	1 lit e 4lit
Conservazione:	24 mesi in pacchetti non aperti, stoccaggio min 5 °C
Infiammabilità:	Non infiammabile
S46	In caso di ingestione, contattare immediatamente un medico e mostrargli l'imballaggio e l'etichettatura.
Date:	Segnato sulla confezione.

TECHNICAL DATA

Specific weight:	1.550 kg/lit +/- 3%
Viscosity:	Thixotropic
Drying:	6 to 8 hours after witch you can apply second coat
Temperature of application:	between 10°C and 30°C
Yield:	8 to 10m ² per 1l
Package:	1 lit and 4lit
Preservation:	24 month in no open packages, storage min 5°C
Flammability:	Not flammable
S46	If swallowed, immediately contact a doctor and show him the packaging and labeling.
Date:	Marked on the packaging.

 **Bellagio** è un rivestimento murale decorativo fatto da speciali emulsioni acriliche altamente resistenti a funghi e batteri. Bellagio diventa completamente lavabile due settimane dopo l'applicazione. È con l'indice COV atossico (<17) L/A 200g/l (2010). Può essere usato in impianti con **NEOPRO Primer A** e **NEOPRO** vernice resistente.


Applicazione: Applicare Bellagio su superficie liscia, senza polvere. Imperfezione della superficie possono essere trattate con **NEOPRO** stuccatura per i muri. Dopo **NEOPRO** stuccatura per i muri, applicare una mano di **NEOPRO primer A**, debitamente diluito con acqua in rapporto da 1:5 a 1:10, a seconda dell'assorbimento della superficie. Lasciare il supporto asciugare per almeno 4 ore ed applicare quindi due mani di **NEOPRO** vernice resistente a intervalli di 4 - 5 ore. **Colorazione:** Bellagio, Bellagio rosso o Bellagio oro può essere tinteggiato in tintometro in diverse tonalità, come da carta colori **NEOLINE**.

Gli sono 3 diversi metodi di applicazione, come riportato qui di seguito:

• **Effetto Spatolato:** Stendere uno strato di Bellagio con la paletta speciale Bellagio in plastica, di spessore di circa 0.5 - 1 mm e lasciare asciugare per circa 6-8 ore. Applicare una seconda mano di Bellagio in piccole aree una alla volta per circa 1 metro quadrato e muoversi sulla superficie avanti e indietro, ripetere quindi la procedura finché non venga completata l'intera superficie in oggetto.

• **Effetto Damascato:** Stendere uno strato di Bellagio con la paletta speciale Bellagio di plastica, di spessore di circa 0.5 - 1 mm e lasciare asciugare per circa 6-8 ore. Applicare il secondo strato di Bellagio ed uniformare la superficie. Una volta asciutto, applicare altre quantità di Bellagio con la speciale spatola Bellagio o con un pennello, applicare sull'intera superficie, comprimere quindi la superficie in direzioni irregolari, attendere circa 5 minuti e passare leggermente la superficie con una spatola pulita di plastica Bellagio.

• **Effetto Broccato:** Stendere uno strato di Bellagio con la speciale spatola di plastica Bellagio con uno spessore di circa 0.5-1 mm e lasciare asciugare per circa 6-8 ore. Applicare la seconda mano di Bellagio che dovrebbe avere uno spessore superiore a quello della prima mano. Coprire circa 1 metro quadrato alla volta e passare sopra la superficie con la speciale spatola 'Red Broccato' in direzioni circolari e irregolari. Continuare con la stessa procedura fino ad avere ricoperto l'intera superficie.

 Bellagio is decorative wall finish made from special acrylic emulsion containing natural, synthetic additives and pigments. It is non-toxic, VOC compliant material non-yellowing, decorative wall covering highly resistant to fungi and bacteria. Bellagio can be used for public environments, hotels, restaurants, boutiques and prestigious surroundings in private houses. It can be used in system with **NEOPRO primer A** and **NEOPRO** durable paint.

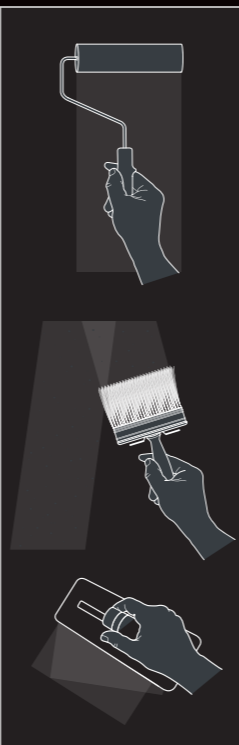
Application: Apply Bellagio on smooth surface, without dust. Surface imperfection can be prepared with **NEO** wall putty. After **NEO** wall putty apply one coat of **NEOPRO primer A**, properly diluted with water in a ratio of 1:5 to 1:10, according to the support absorption degree. Let the support dry for at least 4 hours and apply two coats of **NEOPRO** durable paint at 4 - 5 hour intervals. **Coloring:** Bellagio, Bellagio red or Bellagio gold can be tinted on tinting machine in different color shades from **NEO** design studio color chart.

There are 3 different methods of application as follows:

• **Effect Spatolato:** Spread 1 coat of Bellagio with the special Bellagio plastic trowel with a thickness of about 0.5 - 1 mm and leave to dry for about 6 to 8 hours. Apply a second coat of Bellagio in small areas at a time about 1 square meter go over the surface in criss cross directions continue with the same procedure until you have completed the entire surface.

• **Effect Damascato:** Spread 1 coat of Bellagio with the special Bellagio plastic trowel with a thickness of about 0.5 - 1 mm and leave to dry for about 6 to 8 hours. Apply a second coat of Bellagio and even the surface, when dry apply more Bellagio with the special Bellagio trowel or with a paint brush, apply to the entire surface, tamping the surface in irregular directions, wait for about 5 minutes and then gently go over the surface with a clean Bellagio plastic trowel.

• **Effect Broccato:** Spread 1 coat of Bellagio with the special Bellagio plastic trowel with a thickness of about 0.5 - 1 mm and leave to dry for about 6 to 8 hours. Apply a second coat of Bellagio it should be thicker than the first coat covering about 1 square meter at a time and go over the surface with a special Red Broccato trowel in irregular circular directions continue with the same procedure until you have completed the entire surface.



Gold base



Red base



NEOCOLORI

Colori dell'Italia



Silver base



— Smooth velvet finish effect —



NEOCOLORI

Piazza Borromeo 14 | 20122 Milano | Italy



Il mondo della decorazione • World of decorations



BS 11E



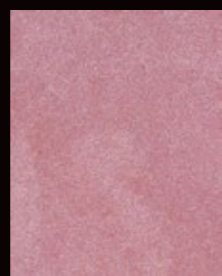
BS 11F



BS 11G



BS 11H



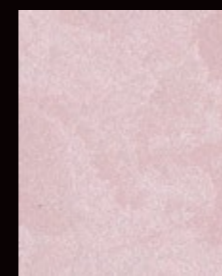
BS 17E



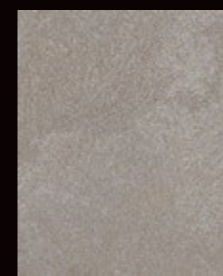
BS 17F



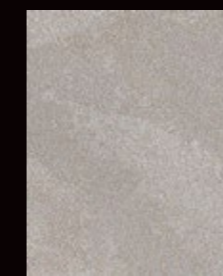
BS 17G



BS 17H



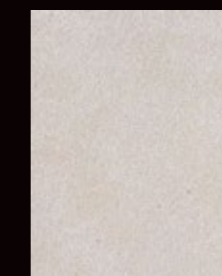
BS 23E



BS 23F



BS 23G



BS 23H



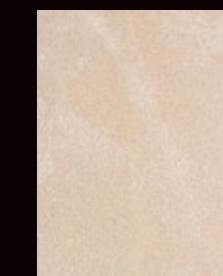
BS 29E



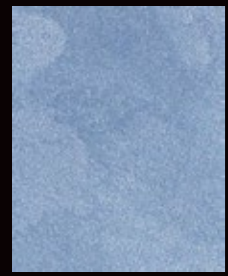
BS 29F



BS 29G



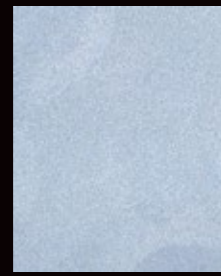
BS 29H



BS 12E



BS 12F



BS 12G



BS 12H



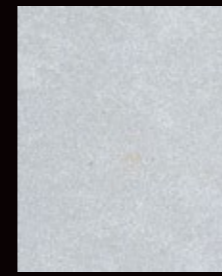
BS 18E



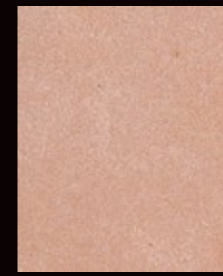
BS 18F



BS 18G



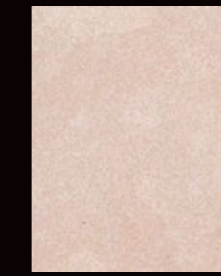
BS 18H



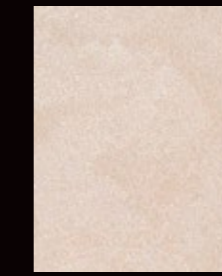
BS 24E



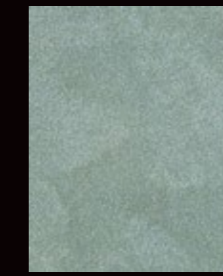
BS 24F



BS 24G



BS 24H



BS 30E



BS 30F



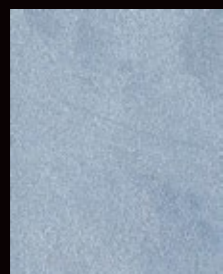
BS 30G



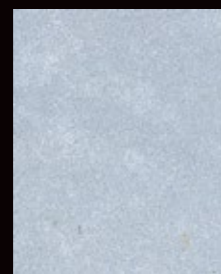
BS 30H



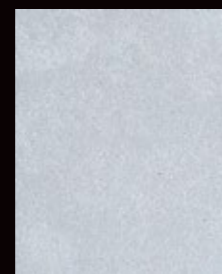
BS 13E



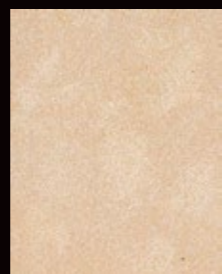
BS 13F



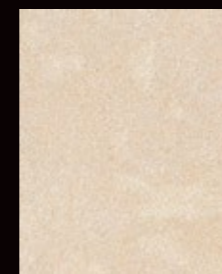
BS 13G



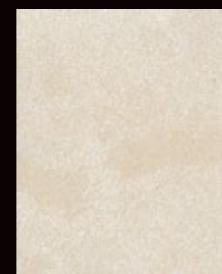
BS 13H



BS 19E



BS 19F



BS 19G



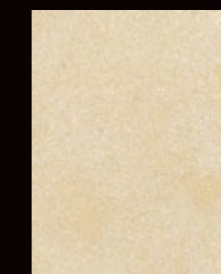
BS 19H



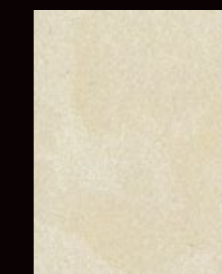
BS 25E



BS 25F



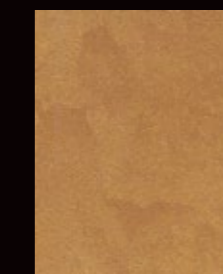
BS 25G



BS 25H



BG 22E



BG 23E



BG 24E



BG 28E



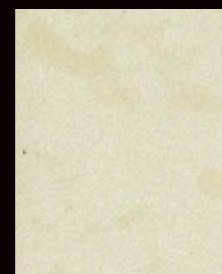
BS 14E



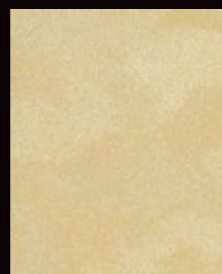
BS 14F



BS 14G



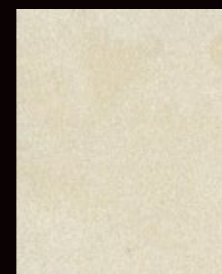
BS 14H



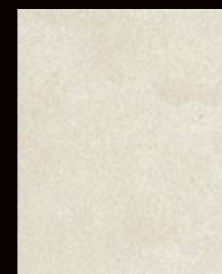
BS 20E



BS 20F



BS 20G



BS 20H



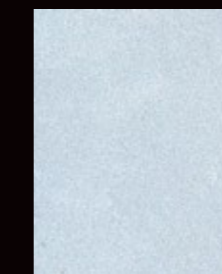
BS 26E



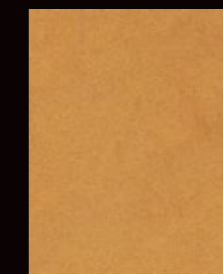
BS 26F



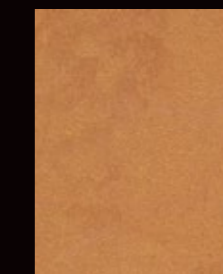
BS 26G



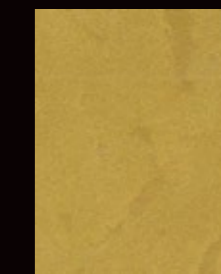
BS 26H



BG 17E



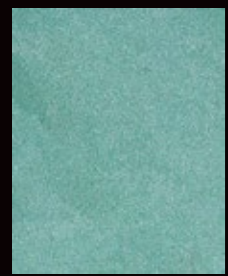
BG 27E



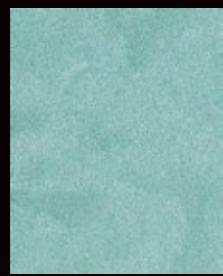
BG 30E



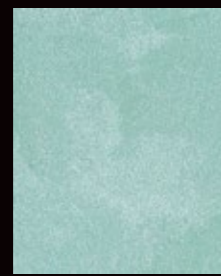
BG 26E



BS 15E



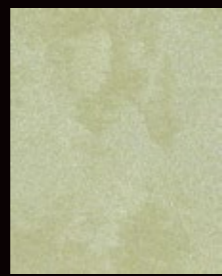
BS 15F



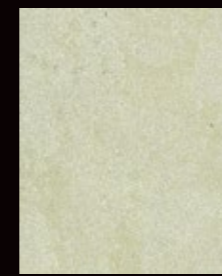
BS 15G



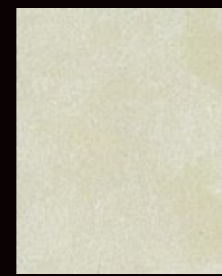
BS 15H



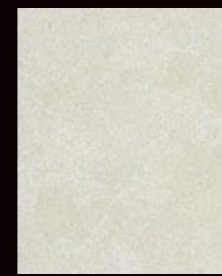
BS 21E



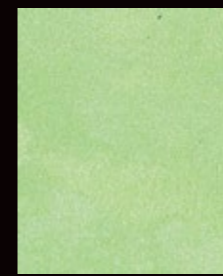
BS 21F



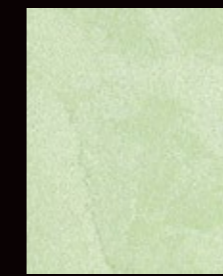
BS 21G



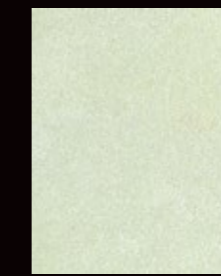
BS 21H



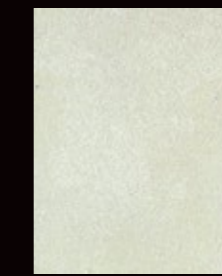
BS 27E



BS 27F



BS 27G



BS 27H



BR 17F



BR 22F



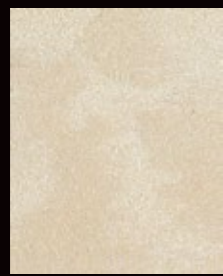
BR 26F



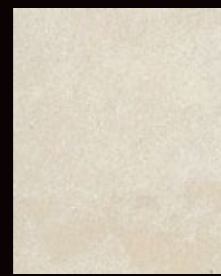
BR 30F



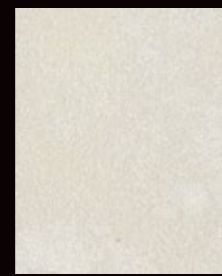
BS 16E



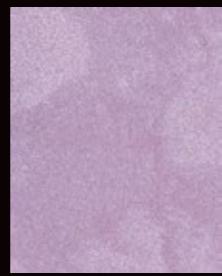
BS 16F



BS 16G



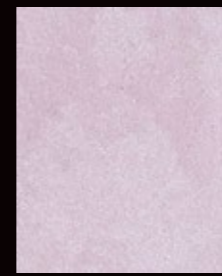
BS 16H



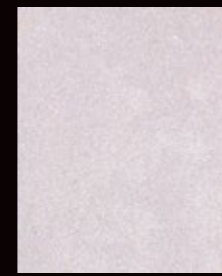
BS 22E



BS 22F



BS 22G



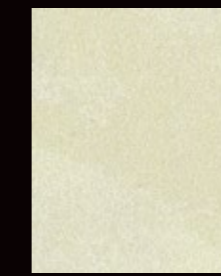
BS 22H



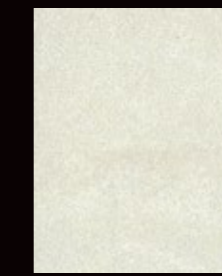
BS 28E



BS 28F



BS 28G



BS 28H



BR 17E



BR 22E



BR 26E



BR 30E